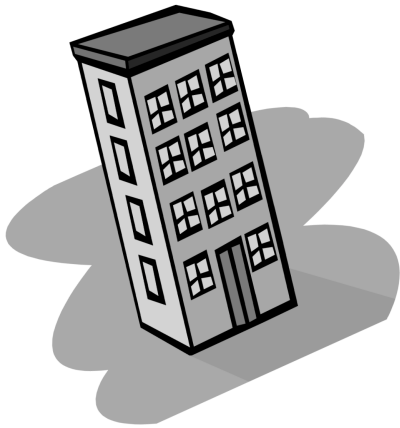


## Home Sweet Home

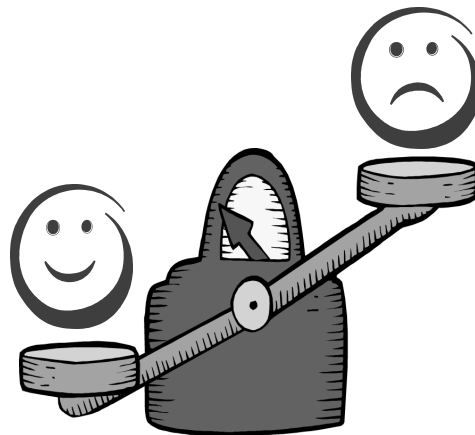


## Decisions about Where to Live

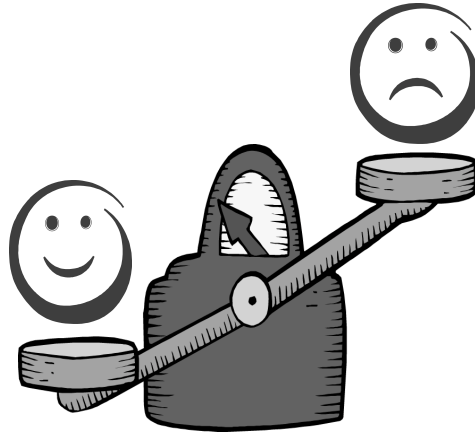


## Advocates in Action

(c) 2001 (c)



# HOW do you make decisions?????



**You need to have the right information.**

How much will it cost?



What do I need to do or learn to get it?

Will I like it?

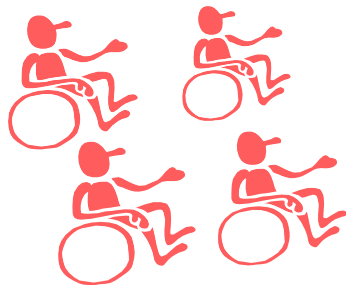


Is it safe?

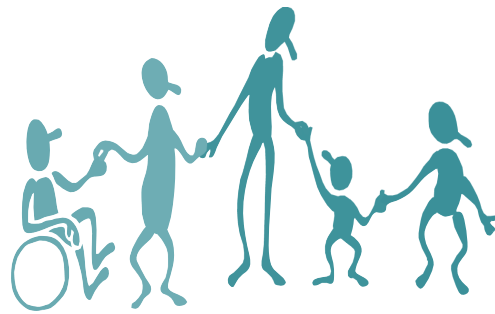
What are my other choices?



Any other questions?



**In a Group Home**



**With a Family -  
In Their Home**



**Something Else?**



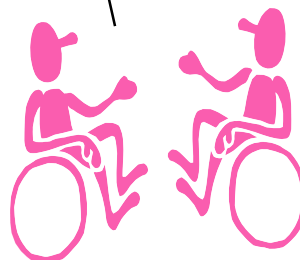
**On My Own: "Alone"**



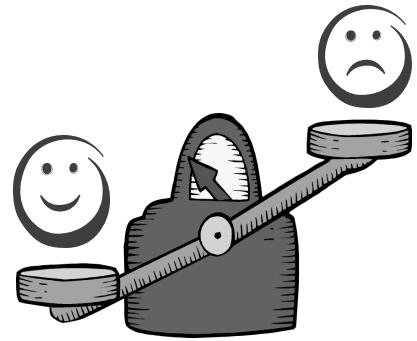
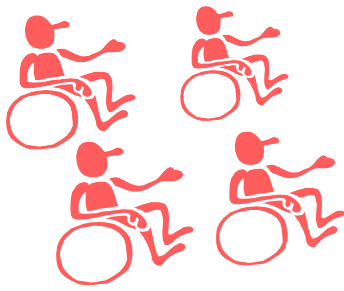
**Living with your  
parents/  
other family  
members**



**"Shared Living -  
With a roommate who  
helps support me**



**"Supported Living" - Sharing  
with another person who gets  
services because they have a  
disability**



## In a Group Home



Paying bills - not so "hard".

Lots of people are always around.

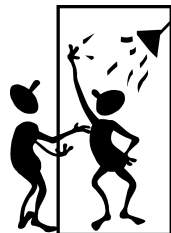


Meals are balanced and healthy.



Staff are always available.

Get help with personal care needs.



?



Most of your SSI check goes to agency to pay bills.

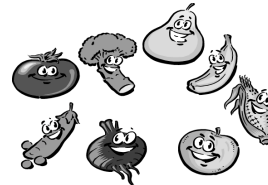


You don't always chose your roommates.



Not as much personal space.

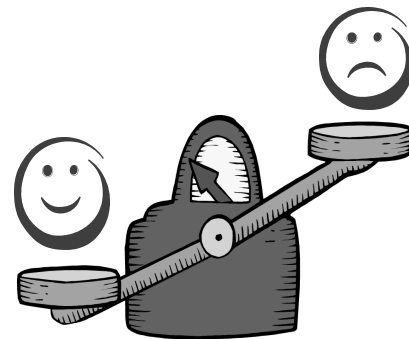
You don't always chose the food you want.



People "know your business".



?



# On My Own: "Alone"



You have privacy.



You can get lonely.



You have freedom to do things your own way (*eat when you want, go to bed when you want, watch tv shows you want, etc*).

It can mean less support than in other settings.

You control your money.

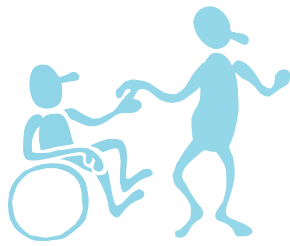


It's expensive - there's no one to share the bills with.

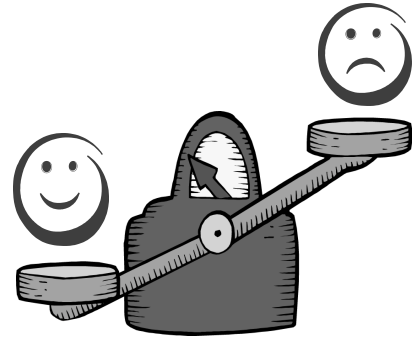


?

?



# “Shared Living - With a roommate who helps support me



Make connections by meeting your roommates friends.



Natural supports (*people you meet who help you in some way without getting paid*) could grow.



Just meeting someone doesn't mean friendship.

There may be less “safety” from natural supports.

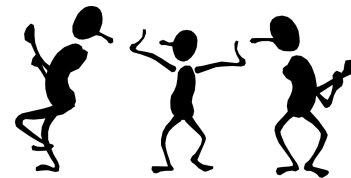


People move on.

A better chance to experience living in the community and being a part of it.



Roommates can be hard to get along with.



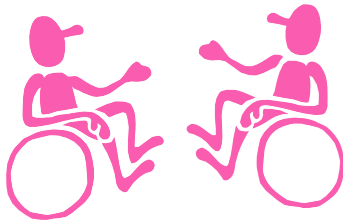
Doesn't feel as much like having “staff”.

Who is the person you live with? Your friend? Your staff?? It gets confusing and can make things hard.

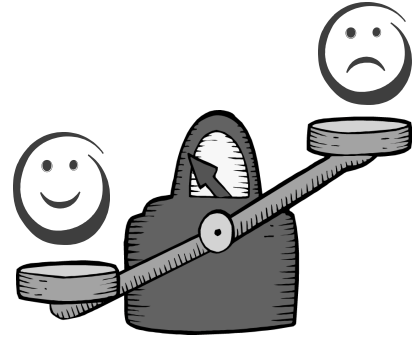


?

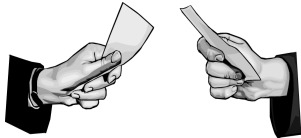
?



**“Supported Living” - Sharing with another person who gets services because they have a disability**



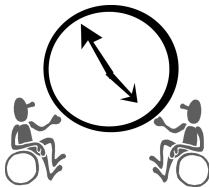
You can share expenses - save money.



Less choice about how to spend the money.



You can get more staff time by sharing staff hours.



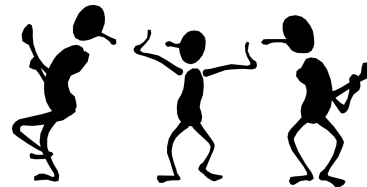
You sometimes have to “share” your staff. You won’t always get to do what YOU want with staff hours.



Companionship - someone else is around.



Sometimes it’s hard to have a roommate. You won’t always get along.

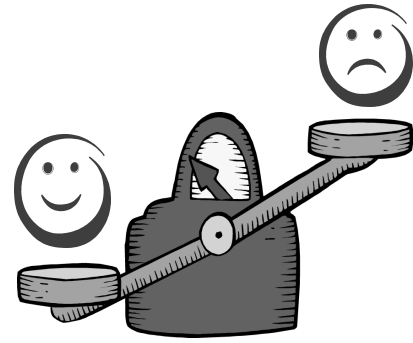


?

?



## Living with your parents/ other family members



It's "family"



Family knows your needs

May be less expensive



You may have less responsibilities

Feels comfortable with mom and dad

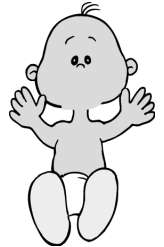


You may be/feel safer

?



May not be treated like an adult

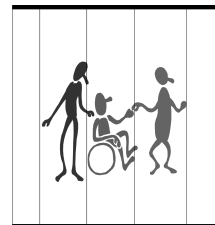


May not decide what to do with your money

May not learn new skills (*everything may be "taken care of"*)

You may want more responsibilities

May feel over-protected

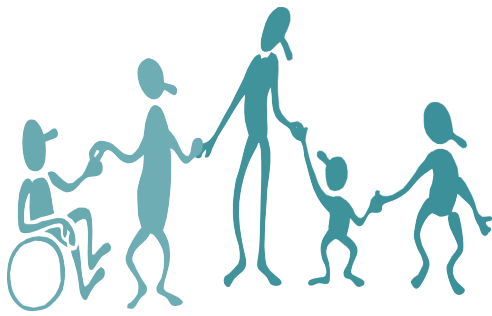


Parents are getting older

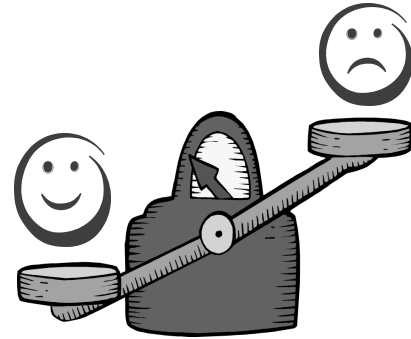


?





**With a Family -  
In Their Home**



The feeling of "family".

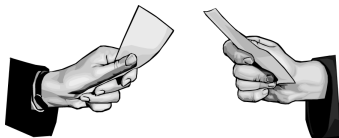
Don't need to have a lot of furniture,  
etc. The home is already there.



Companionship - people are around.



Paying bills may be easier.



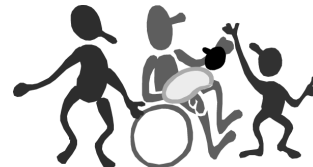
?

Question: where do you fit in with this  
family??



Not your home - *already decorated,*  
*some family "rules" have been decided.*

Do you want a whole family around??  
Are you ready to live with kids??

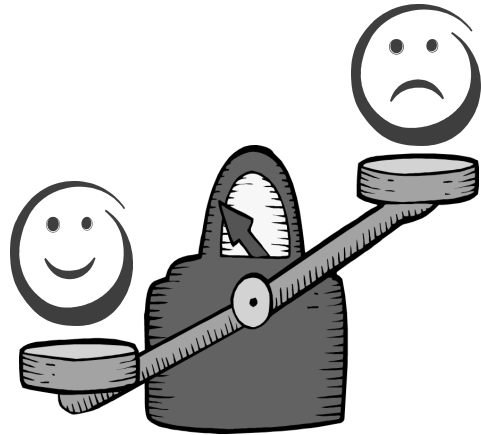


Sharing expenses can get confusing.

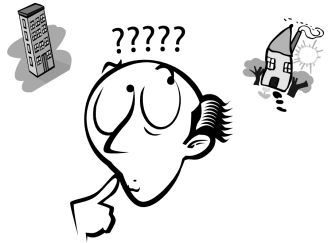
?



## Something Else?



Think of other possible places to live and people to live with.



What are some good things about the different places you might live?



What are some bad things about the different places you might live?